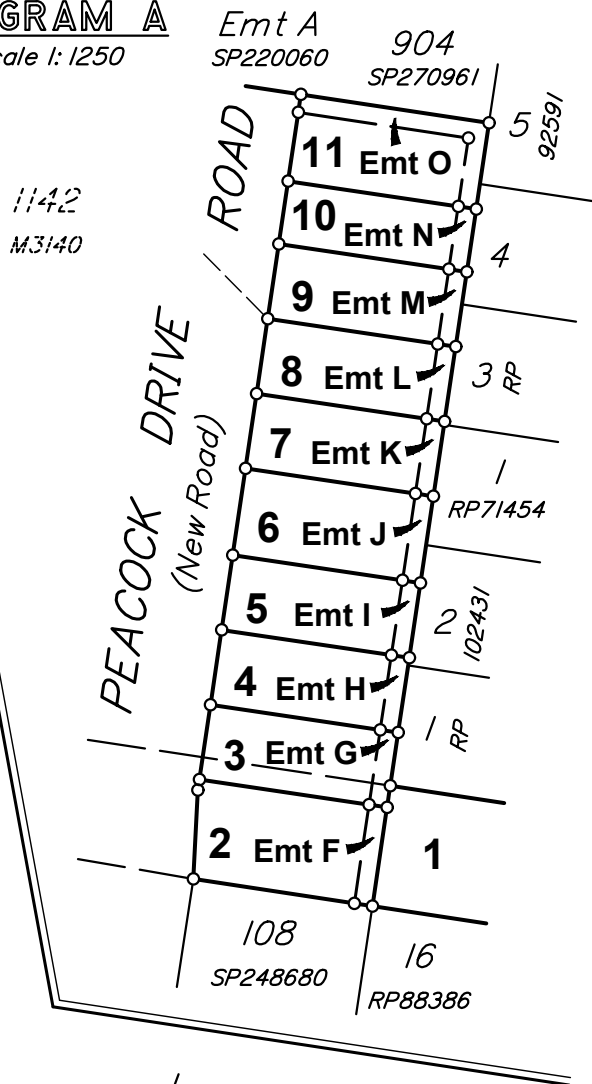


DIAGRAM A

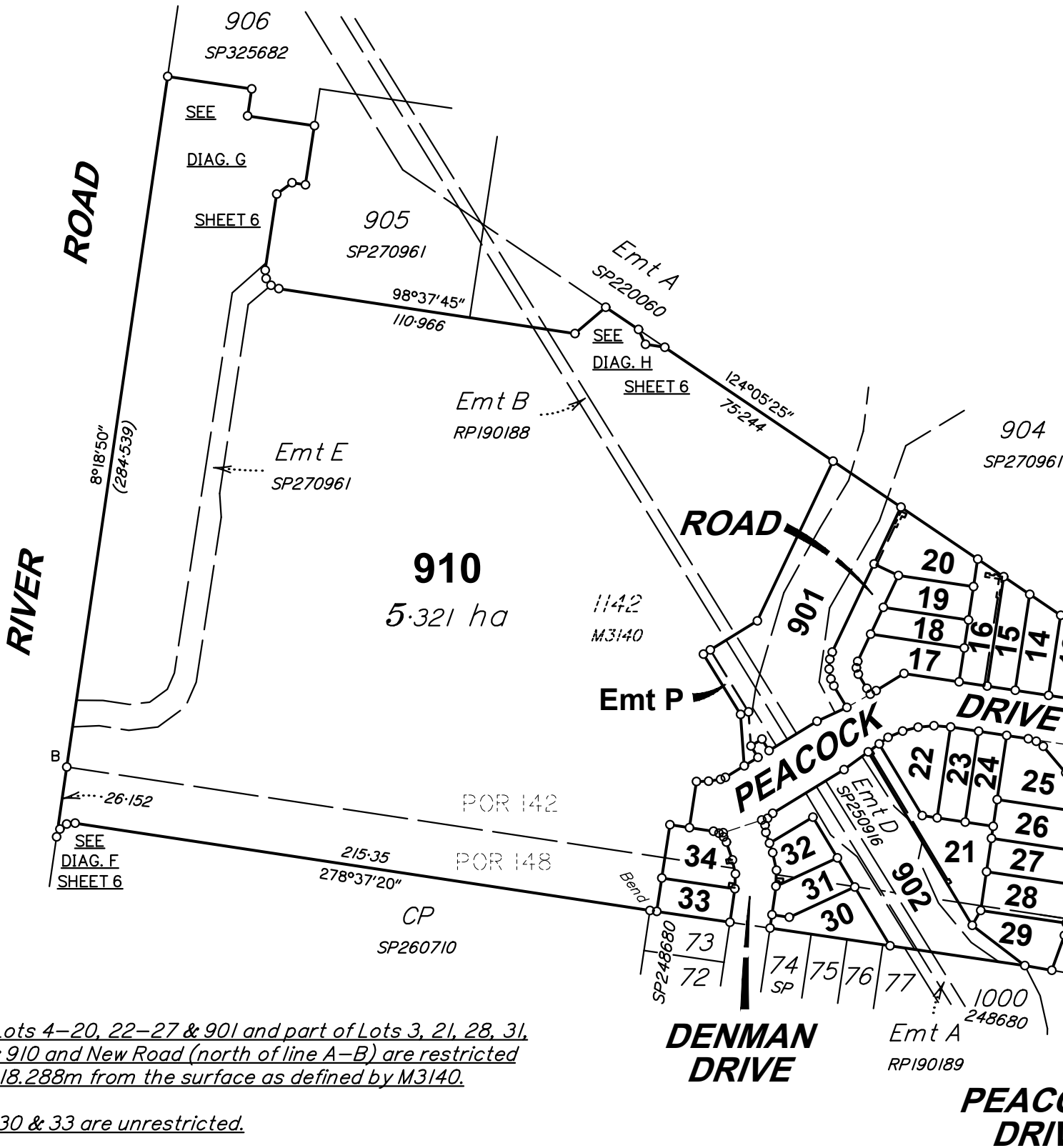
Scale 1:1250



For Details of Lots 1–11, See Sheet 3.
For Details of Lots 12–20 & 901, See Sheet 4.
For Details of Lots 21–34 & 902, See Sheet 5.

Area of New Road

6329 m²



The whole of Lots 4–20, 22–27 & 901 and part of Lots 3, 21, 28, 31, 32, 34, 902 & 910 and New Road (north of line A–B) are restricted to a depth of 18.288m from the surface as defined by M3140.

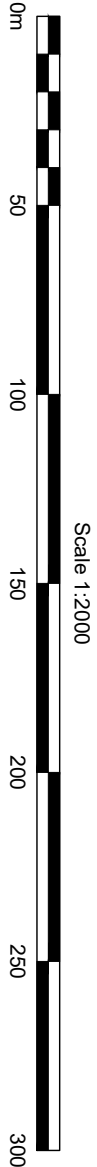
Lots 1, 2, 29, 30 & 33 are unrestricted.



Prepared by B.B.H Pty Ltd
Cadastral Surveyor trading as Bennett and Bennett Group.
BENNETT + BENNETT
Surveying, Town Planning & Spatial Services.
www.bennettandbennett.com.au

NOTE!

This is a disclosure plan (standard format) and the final plan may be subject to change. The proposed lots have not been defined on site, and B.B.H. Pty Ltd Cadastral Surveyor accepts no responsibility for any amendments to location, areas, or shape that may occur during the development process. This plan has been prepared for the purpose of identifying the approximate location and size of registrable interests, and has been derived from information supplied by others. Lot areas may vary by up to 2.0%. This note is an integral part of this plan and no part of the plan may be reproduced without this note.



Scale 1:2000

Scale: 1:2000

Format: STANDARD

DRAFT SP357820

Meridian: MGA Zone 56 wide SP250916

Survey Records: No

Disclosure Plan of Lots 1, 2, 29, 30 & 33, 3–28 (Restricted), 31 (Restricted), 32 (Restricted), 34 (Restricted), 901 (Restricted), 902 (Restricted) & 910 (Restricted) and Emt F in Lot 2, Emits G–O in Lots 3–11 (Restricted) Respectively, Emt P in Lot 901 (Restricted) Emt Q in Lot 16 (Restricted), Emt R in Lot 20 (Restricted), Emt S in Lot 21 (Restricted), Emt T in Lot 32 (Restricted) and Emits U & V in Lot 34 (Restricted)
Concilling Lot 900 (Restricted) on SP270961
LOCAL GOVERNMENT:
IPSWICH CITY COUNCIL
LOCALITY:
BUNDAMBA

WARNING : Folded or Mutilated Plans will not be accepted.
Plans may be rolled.
Information may not be placed in the outer margins.

Sheet

2

of

6

(Dealing No.)

4. Lodged by

(Include address, phone number, reference, and Lodger Code)

I.	Existing
1.	1.
2.	2.
3.	3.
4.	4.
5.	5.
6.	6.
7.	7.
8.	8.
9.	9.
10.	10.
11.	11.
12.	12.
13.	13.
14.	14.
15.	15.
16.	16.
17.	17.
18.	18.
19.	19.
20.	20.
21.	21.
22.	22.
23.	23.
24.	24.
25.	25.
26.	26.
27.	27.
28.	28.
29.	29.
30.	30.
31.	31.
32.	32.
33.	33.
34.	34.
35.	35.
36.	36.
37.	37.
38.	38.
39.	39.
40.	40.
41.	41.
42.	42.
43.	43.
44.	44.
45.	45.
46.	46.
47.	47.
48.	48.
49.	49.
50.	50.
51.	51.
52.	52.
53.	53.
54.	54.
55.	55.
56.	56.
57.	57.
58.	58.
59.	59.
60.	60.
61.	61.
62.	62.
63.	63.
64.	64.
65.	65.
66.	66.
67.	67.
68.	68.
69.	69.
70.	70.
71.	71.
72.	72.
73.	73.
74.	74.
75.	75.
76.	76.
77.	77.
78.	78.
79.	79.
80.	80.
81.	81.
82.	82.
83.	83.
84.	84.
85.	85.
86.	86.
87.	87.
88.	88.
89.	89.
90.	90.
91.	91.
92.	92.
93.	93.
94.	94.
95.	95.
96.	96.
97.	97.
98.	98.
99.	99.
100.	100.

Created

Title	Reference
-------	-----------

Description

New Lots

Road

Secondary Interests

SHEET 2 IS
INTENTIONALLY
BLANK

6. Building Format Plans only.

I certify that :

* As far as it is practical to determine, no part of the building shown on this plan encroaches onto adjoining lots or road;

* Part of the building shown on this plan
encroaches onto adjoining * lots and road

Cadastral Surveyor/Director* Date

* delete words not required

7. Lodgement Fees :	
Survey Deposit	\$
Lodgement	\$
.....New Titles	\$
Photocopy	\$
Postage	\$
TOTAL	\$

8. Insert Plan Number	DRAFT SP357820
-----------------------------	----------------

2. Orig Grant Allocation :

3. References :

Dept File :

Local Govt :

Surveyor : 211296

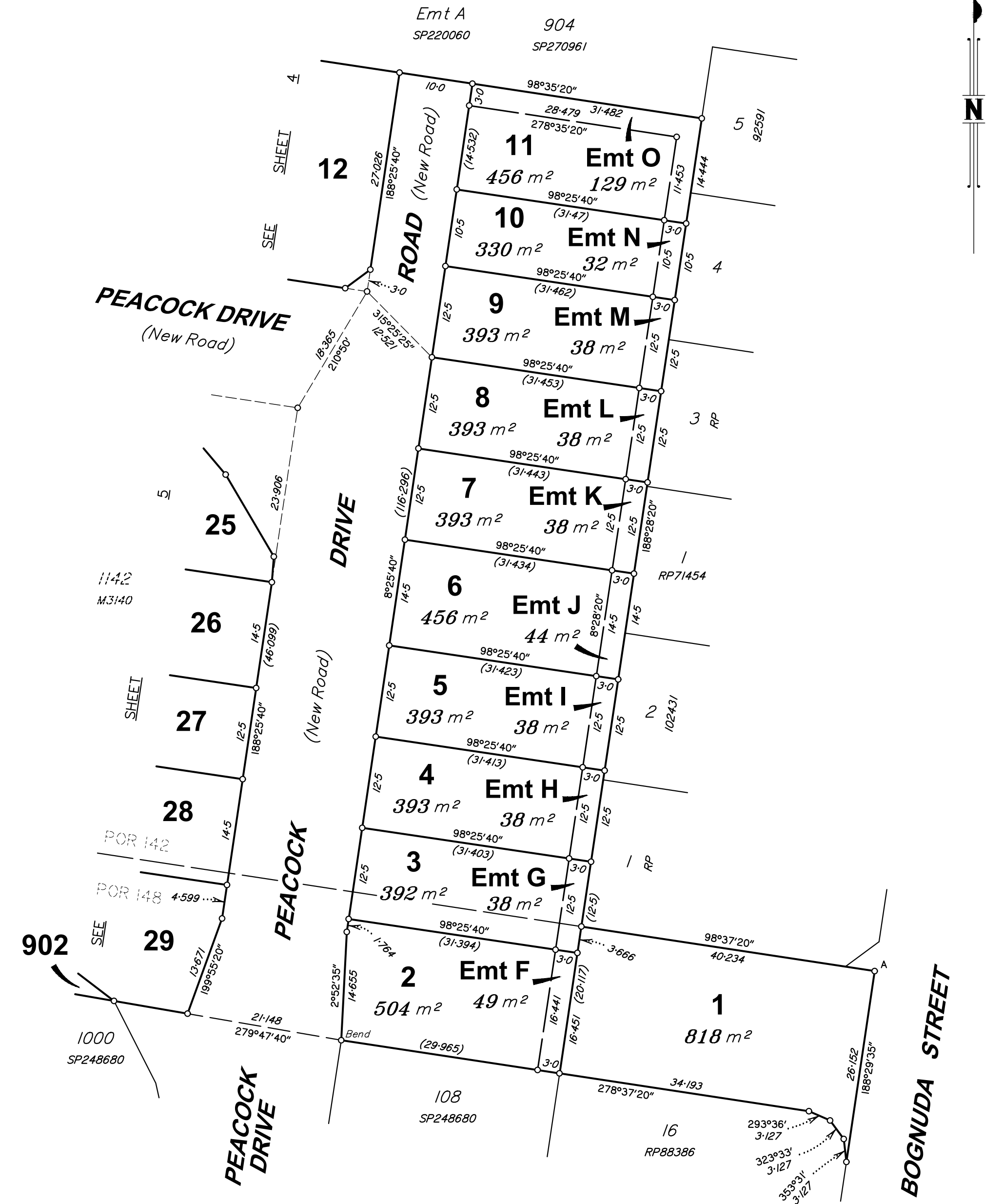
5. Passed & Endorsed :

By: B.B.H. PTY LTD ACN 010 427 531

Date :

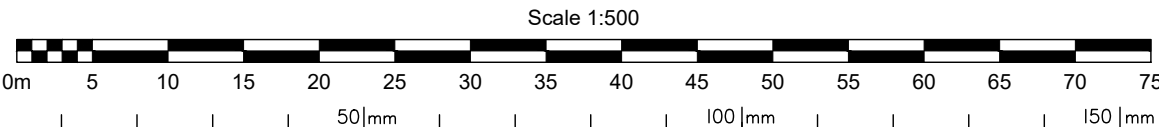
Signed :

Designation : Cadastral Surveyor



BENNETT + BENNETT
Prepared by B.B.H Pty Ltd
Cadastral Surveyor trading as Bennett and Bennett Group.
Surveying, Town Planning & Spatial Services.
www.bennettandbennett.com.au

NOTE!
This is a disclosure plan (standard format) and the final plan may be subject to change. The proposed lots have not been defined on site, and B.B.H. Pty Ltd Cadastral Surveyor accepts no responsibility for any amendments to location, areas, or shape that may occur during the development process. This plan has been prepared for the purpose of identifying the approximate location and size of registrable interests, and has been derived from information supplied by others. Lot areas may vary by up to 2.0%. This note is an integral part of this plan and no part of the plan may be reproduced without this note.



State copyright reserved.
Insert Plan Number **DRAFT SP357820**

DIAGRAM B

Scale 1:250

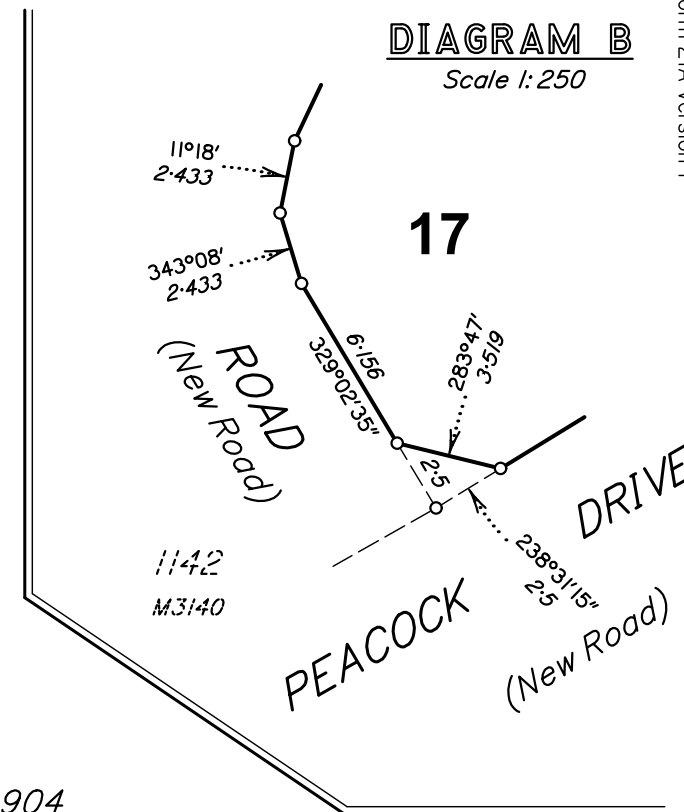
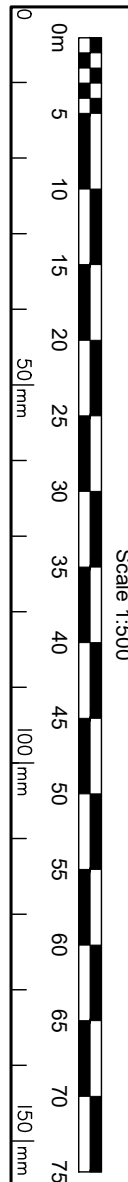
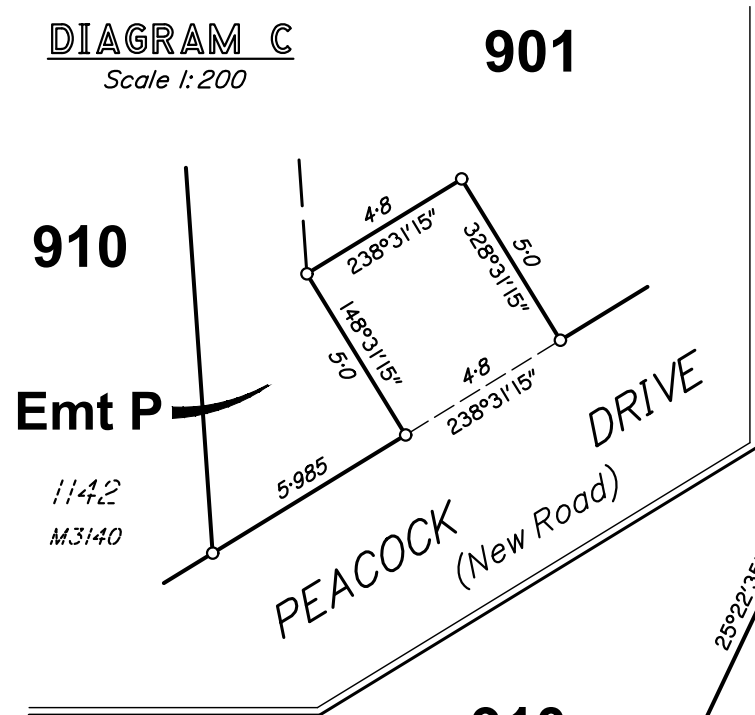


DIAGRAM C

Scale 1:200



Scale 1:500

Emt P
142 m²

SEE
DIAG. C

Emt B
RP190188

Emt D
SP250916

Emt A
SP220060

Emt R
25 m²

Emt Q
48 m²

PEACOCK

BENNETT + BENNETT

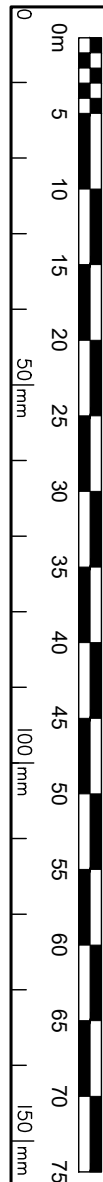
Prepared by B.B.H Pty Ltd
Cadastral Surveyor trading as Bennett and Bennett Group.

Surveying, Town Planning & Spatial Services.
www.bennettandbennett.com.au

NOTE!

This is a disclosure plan (standard format) and the final plan may be subject to change. The proposed lots have not been defined on site, and B.B.H. Pty Ltd Cadastral Surveyor accepts no responsibility for any amendments to location, areas, or shape that may occur during the development process. This plan has been prepared for the purpose of identifying the approximate location and size of registrable interests, and has been derived from information supplied by others. Lot areas may vary by up to 2.0%. This note is an integral part of this plan and no part of the plan may be reproduced without this note.

BENNETT + BENNETT
Prepared by B.B.H Pty Ltd
Cadastral Surveyor trading as Bennett and Bennett Group.
Surveying, Town Planning & Spatial Services.
www.bennettandbennett.com.au



Insert
Plan
Number
DRAFT SP357820

State copyright reserved.

NOTE!
This is a disclosure plan (standard format) and the final plan may be subject to change. The proposed lots have not been defined on site, and B.B.H. Pty Ltd Cadastral Surveyor accepts no responsibility for any amendments to location, areas, or shape that may occur during the development process. This plan has been prepared for the purpose of identifying the approximate location and size of registrable interests, and has been derived from information supplied by others. Lot areas may vary by up to 2.0%.
This note is an integral part of this plan and no part of the plan may be reproduced without this note.

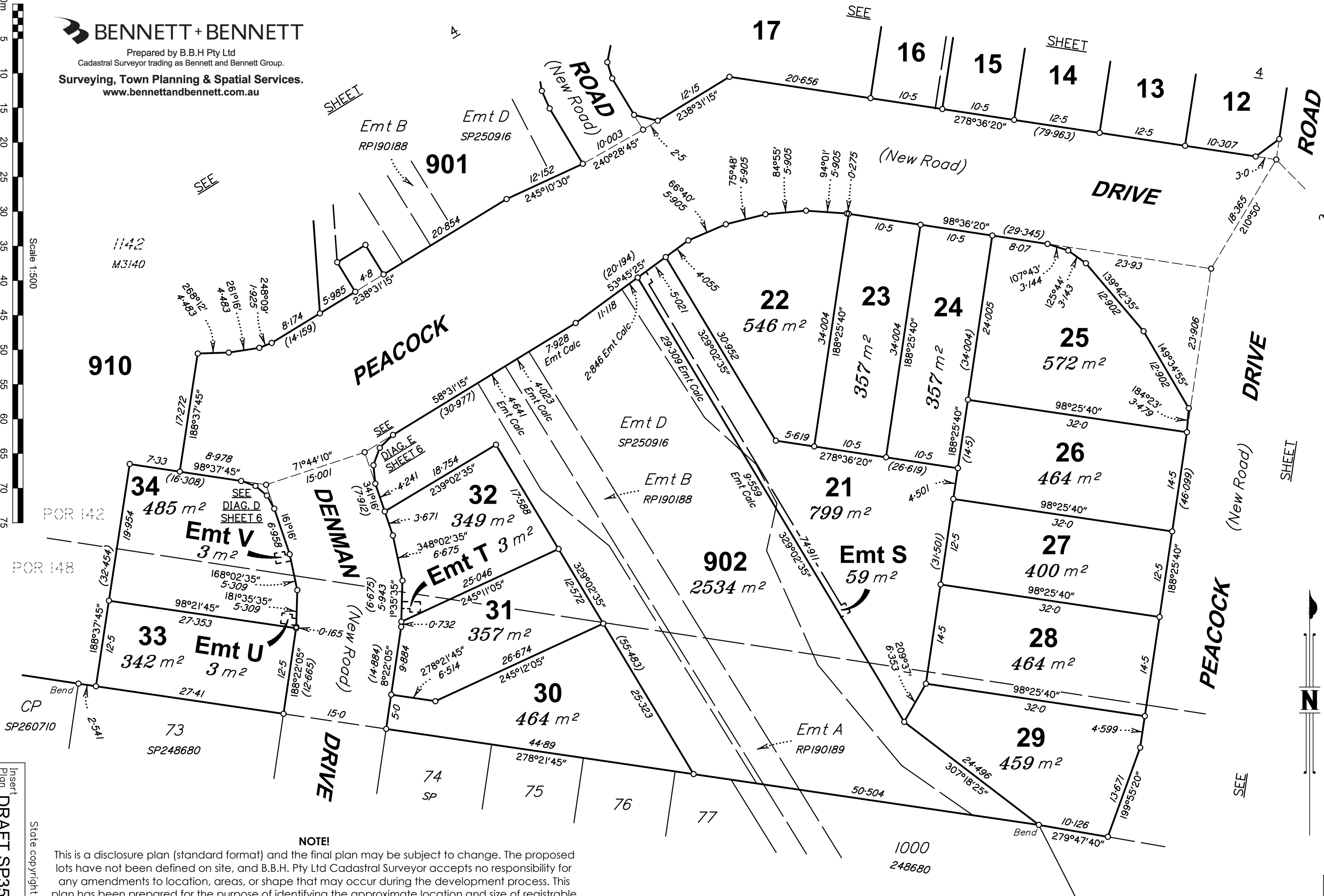


DIAGRAM D

Scale 1: 250

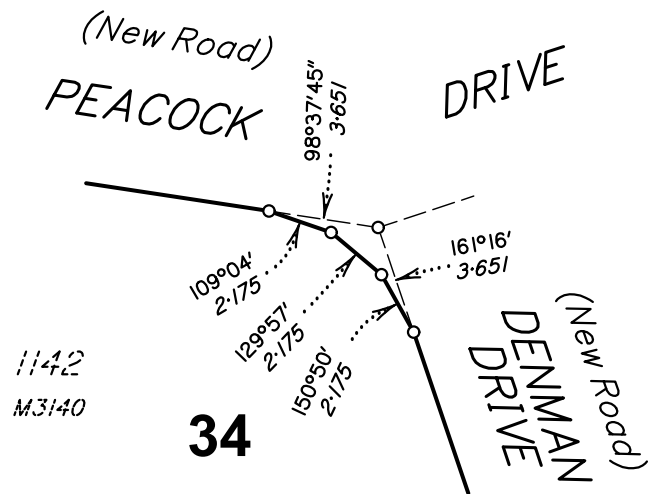


DIAGRAM E

Scale 1: 250

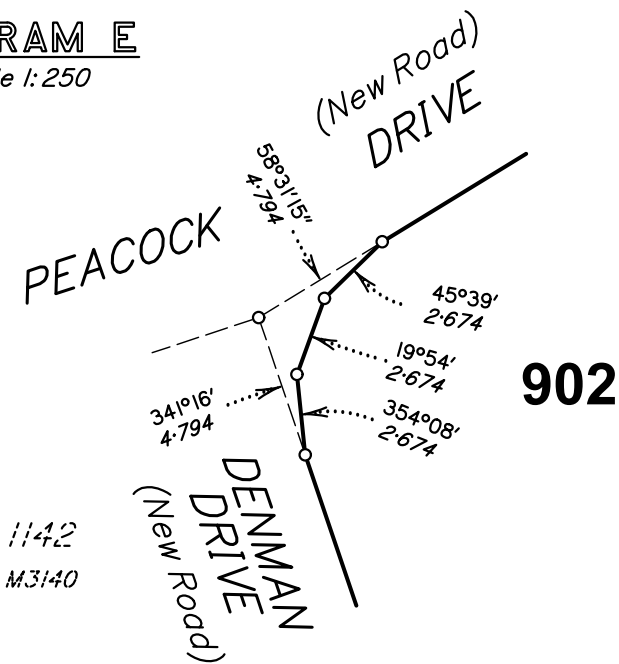


DIAGRAM F

Scale 1: 250

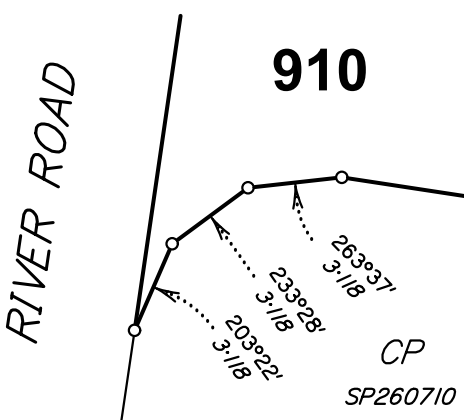


DIAGRAM H

Scale 1: 500

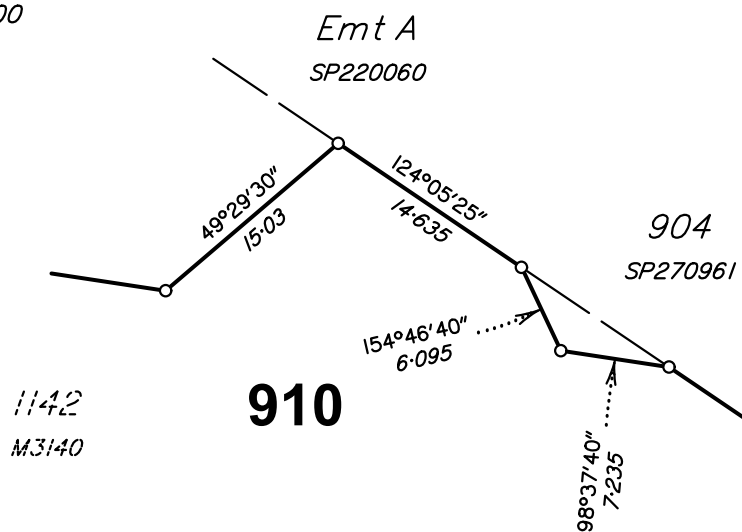
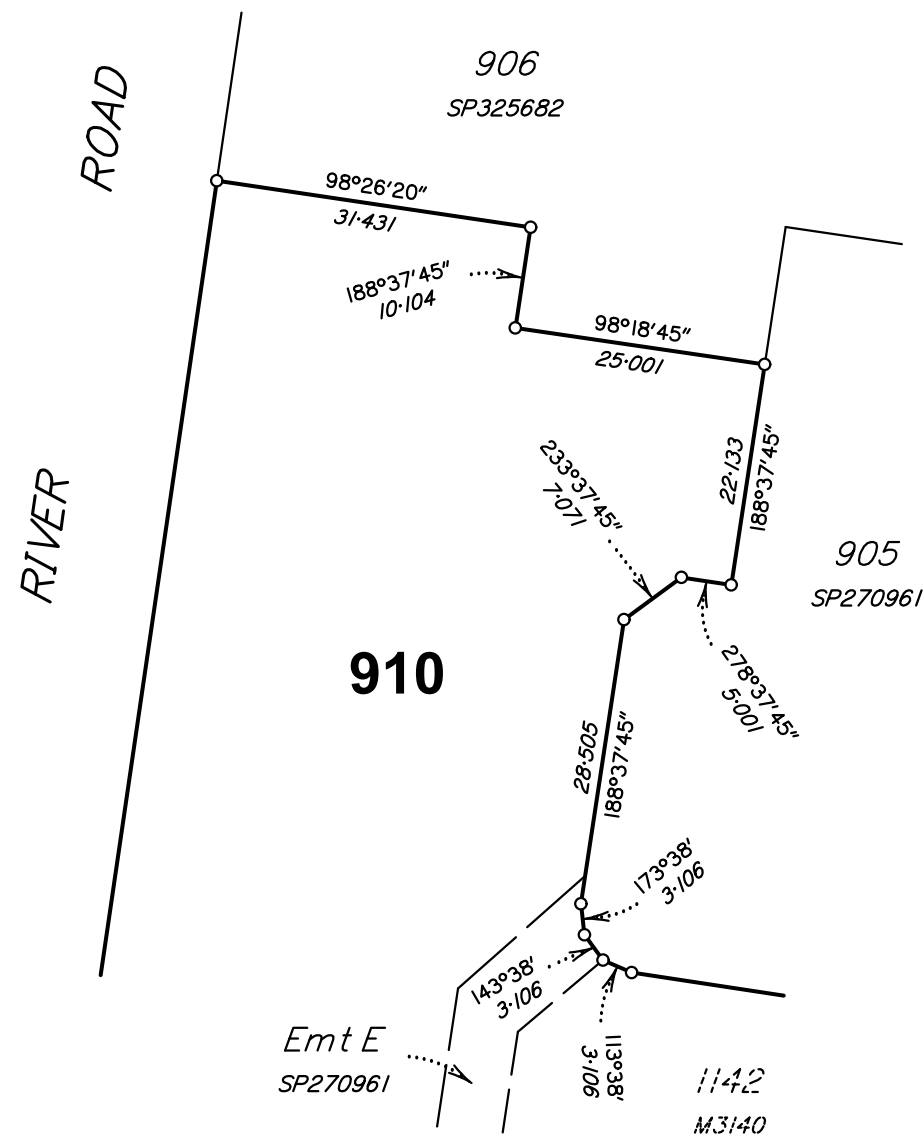


DIAGRAM G

Scale 1: 750



BENNETT + BENNETT
Prepared by B.B.H Pty Ltd
Cadastral Surveyor trading as Bennett and Bennett Group.
Surveying, Town Planning & Spatial Services.
www.bennettandbennett.com.au

NOTE!

This is a disclosure plan (standard format) and the final plan may be subject to change. The proposed lots have not been defined on site, and B.B.H. Pty Ltd Cadastral Surveyor accepts no responsibility for any amendments to location, areas, or shape that may occur during the development process. This plan has been prepared for the purpose of identifying the approximate location and size of registrable interests, and has been derived from information supplied by others. Lot areas may vary by up to 2.0%. This note is an integral part of this plan and no part of the plan may be reproduced without this note.

State copyright reserved.

Insert
Plan
Number
DRAFT SP357820